

A

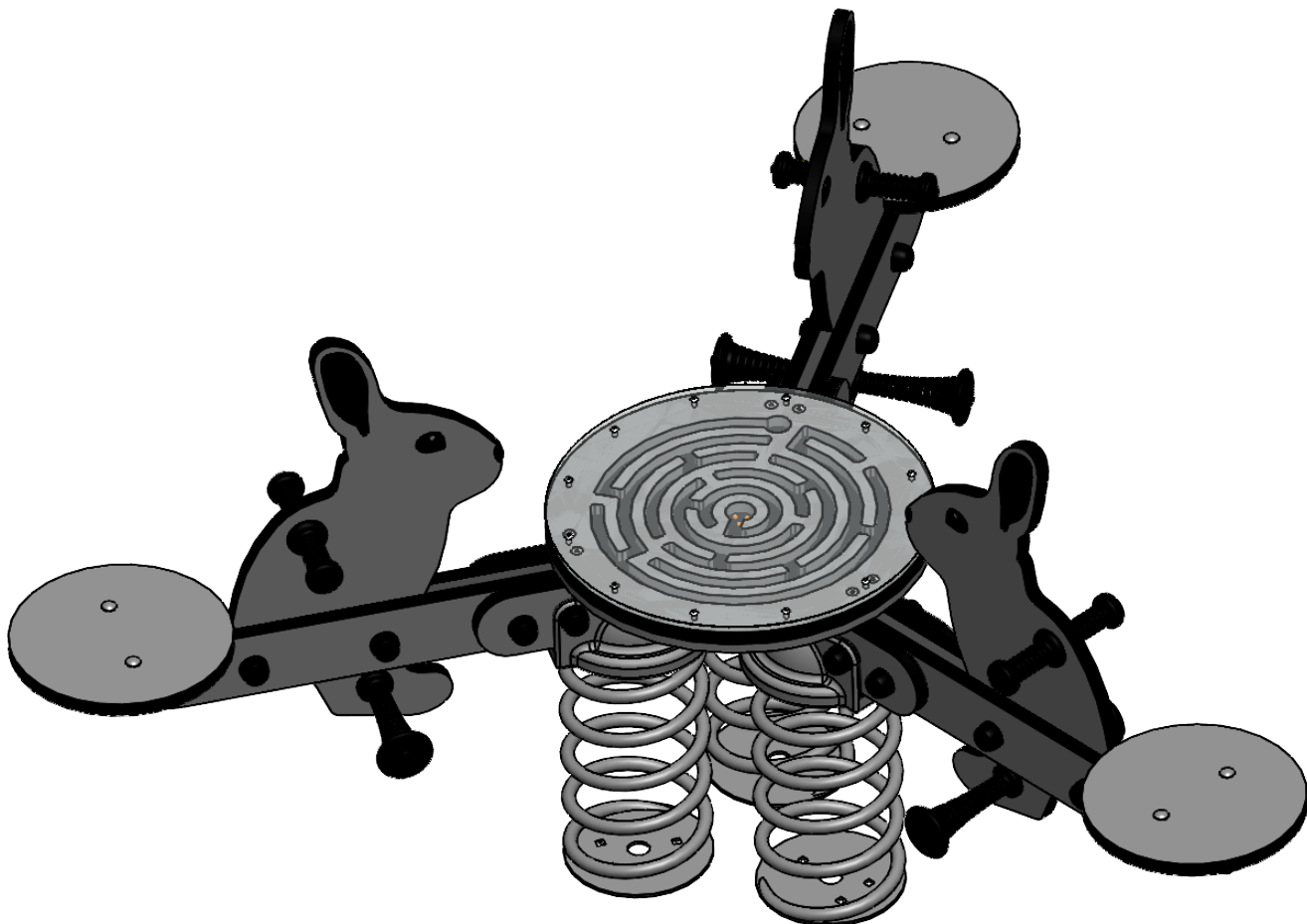
B

C

D

E

F



UNLESS OTHERWISE SPECIFIED:
 DIMENSIONS ARE IN MILLIMETERS
 WEIGHT ARE IN KILOGRAMM

PART NUMBER / DWG NO.:

VL57

	NAME	SIGNATURE	DATE	REVISION
DRAWN	E.Reispere		12.03.2025	
APPV'D				

DESCRIPTION:

Spring swing RABBITS



Tiptiptap⁰⁰

MATERIAL:

wood, metal, plastic

A4

WEIGHT:

SCALE: 1:50

SHEET 1 OF 12

safety area

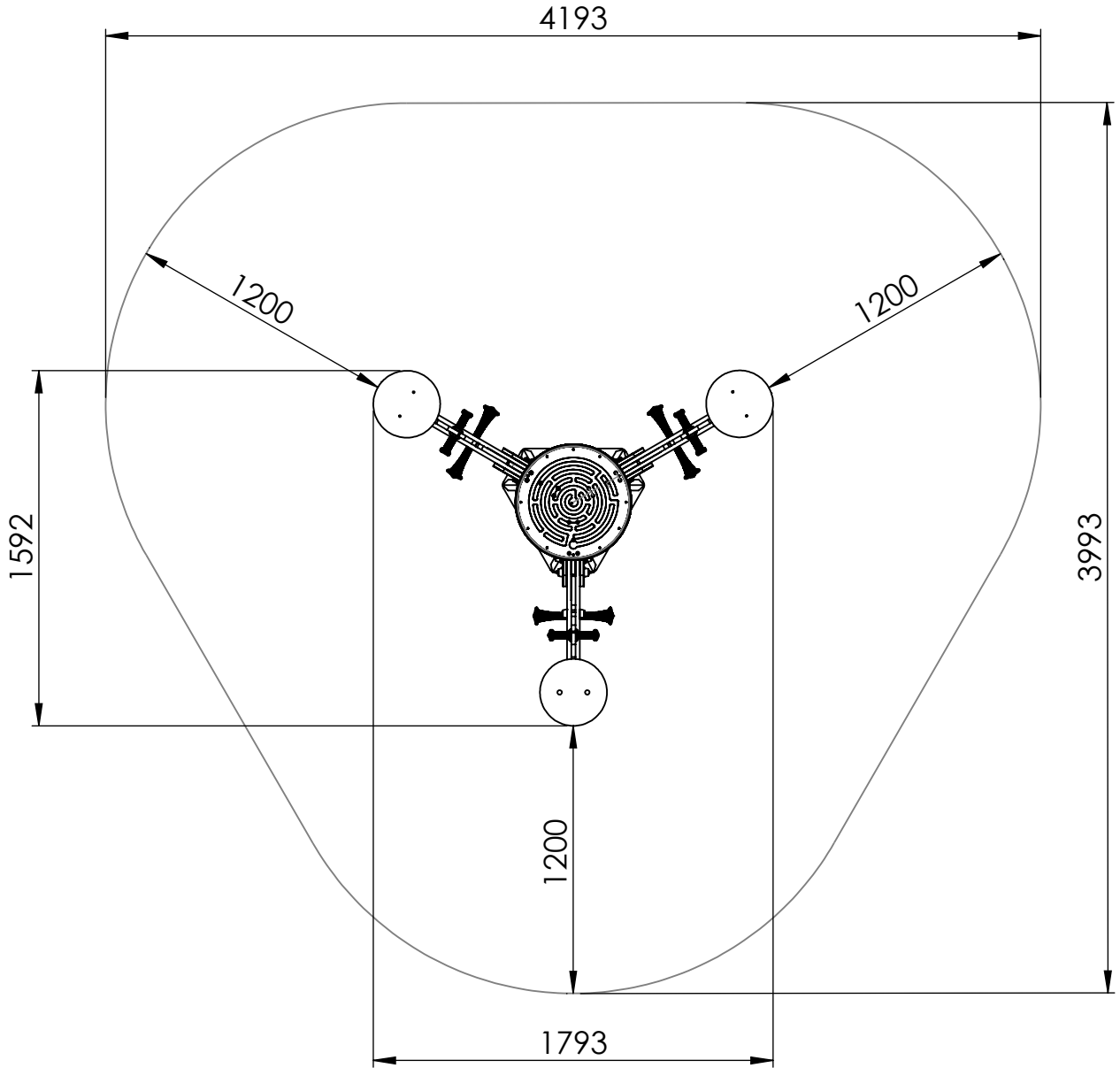
A

B

C

D

E



safety area: 12,74 m²

UNLESS OTHERWISE SPECIFIED:
DIMENSIONS ARE IN MILLIMETERS
WEIGHT ARE IN KILOGRAMM

PART NUMBER / DWG NO.:

VL57

	NAME	SIGNATURE	DATE	REVISION
DRAWN	E.Reispere		12.03.2025	
APPV'D				

DESCRIPTION:

Spring swing RABBITS



Tiptiptap ^{OO}

MATERIAL:

wood, metal, plastic

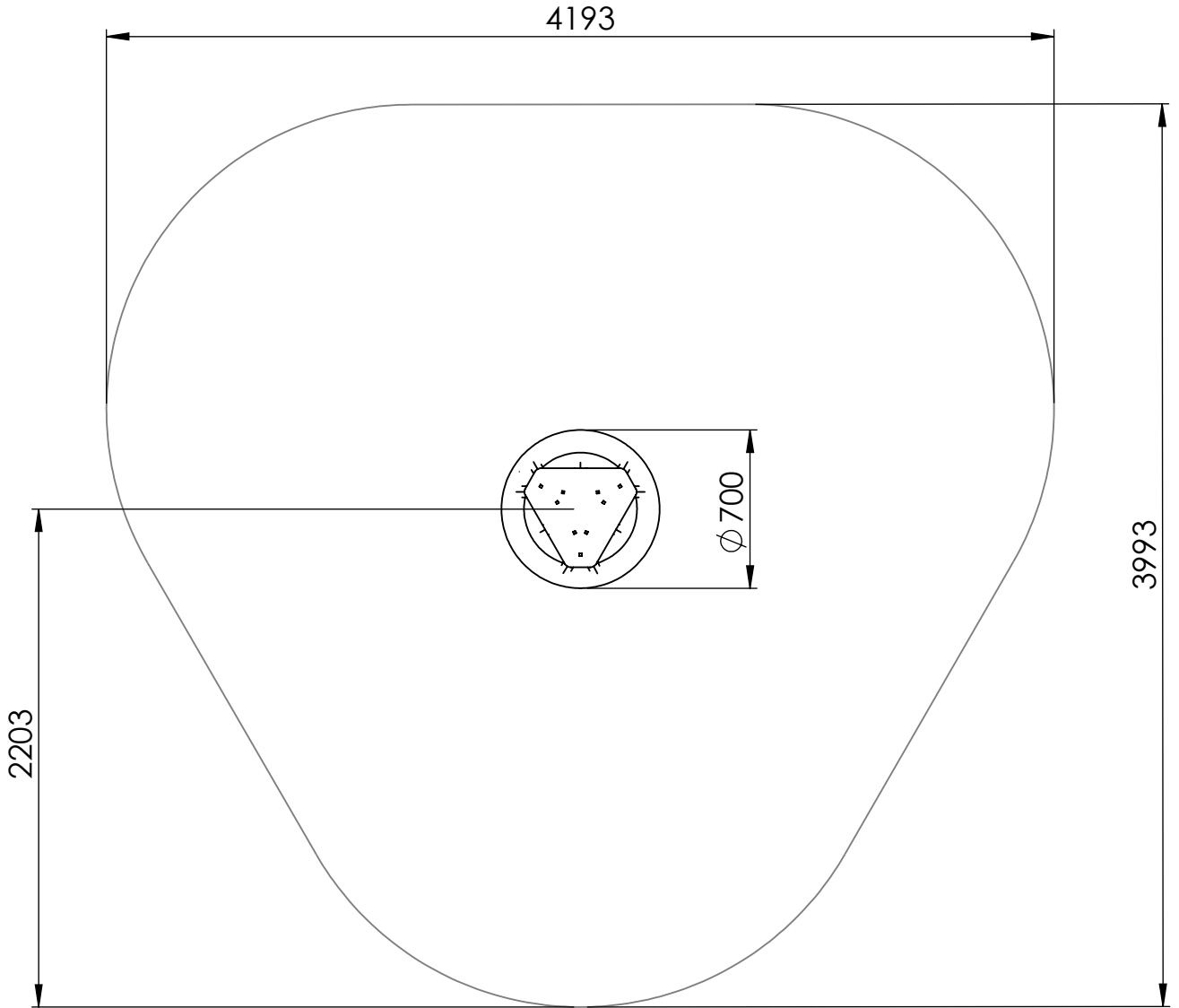
A4

WEIGHT:

SCALE: 1:50

SHEET 2 OF 12

foundation



UNLESS OTHERWISE SPECIFIED:
DIMENSIONS ARE IN MILLIMETERS
WEIGHT ARE IN KILOGRAMM

PART NUMBER / DWG NO.:

VL57

	NAME	SIGNATURE	DATE	REVISION
DRAWN	E.Reispere		12.03.2025	
APPV'D				

DESCRIPTION:

Spring swing RABBITS

MATERIAL:

wood, metal, plastic

A4

WEIGHT:

SCALE: 1:50

SHEET 3 OF 12



Tiptiptap ÖÜ

dimensions

A

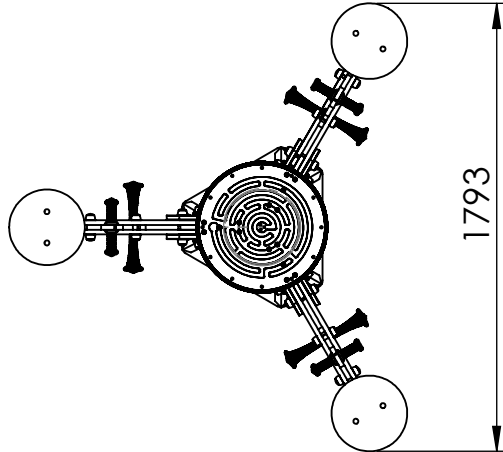
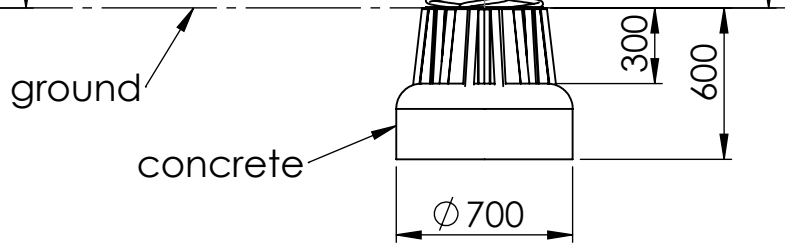
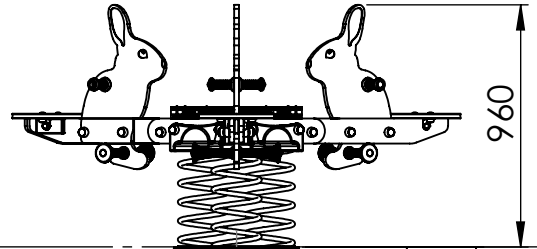
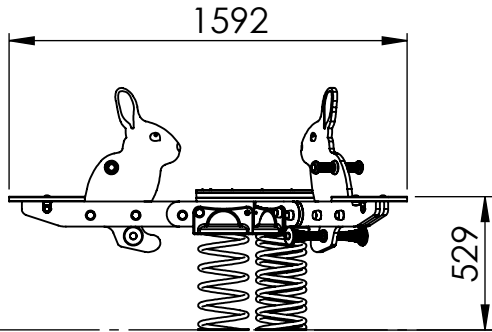
B

C

D

E

F



UNLESS OTHERWISE SPECIFIED:
 DIMENSIONS ARE IN MILLIMETERS
 WEIGHT ARE IN KILOGRAMM

PART NUMBER / DWG NO.:

VL57

	NAME	SIGNATURE	DATE	REVISION
DRAWN	E.Reispere		12.03.2025	
APPV'D				

DESCRIPTION:

Spring swing RABBITS

MATERIAL:

wood, metal, plastic

A4

WEIGHT:

SCALE: 1:30

SHEET 4 OF 12



Tiptiptap ^{oü}

A

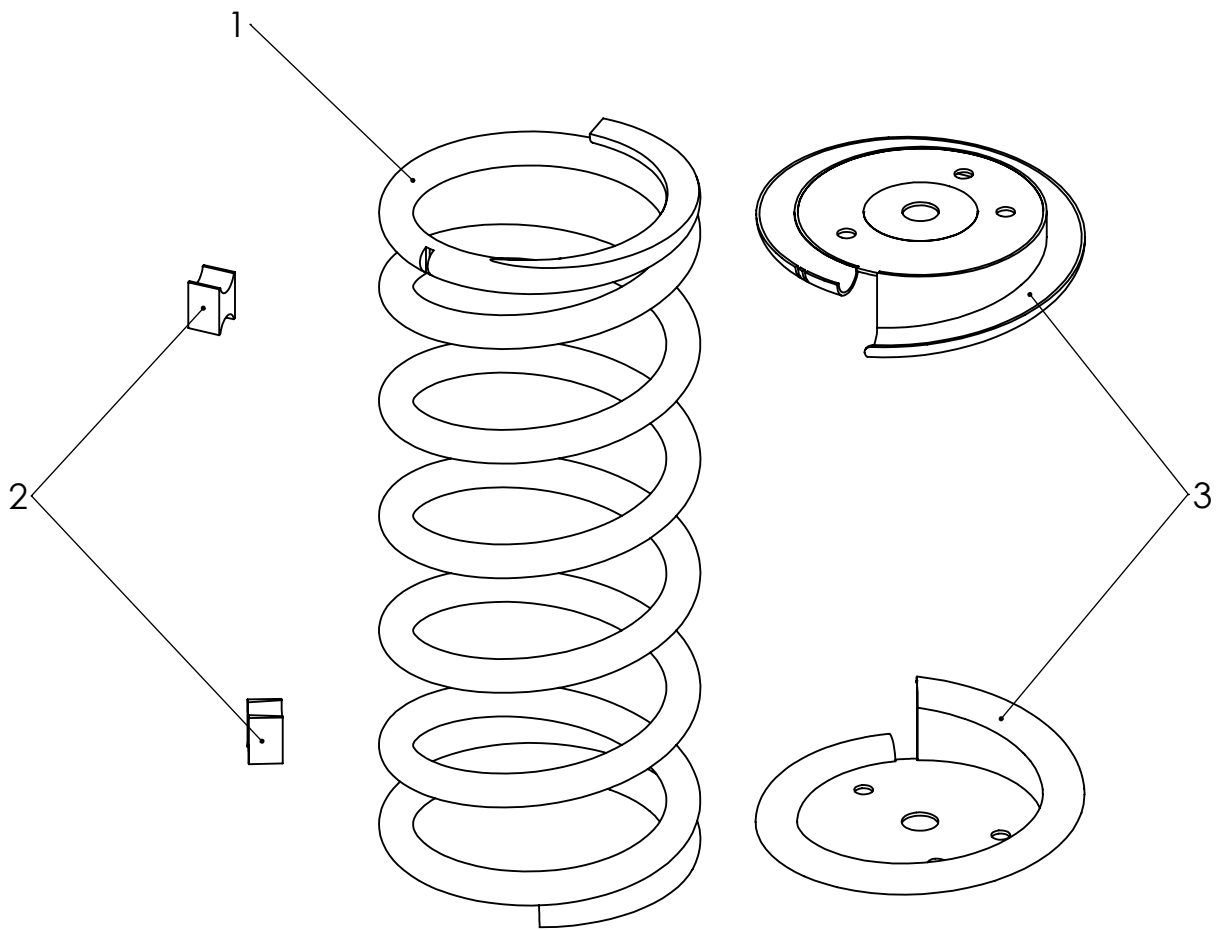
B

C

D

E

F



ITEM NO.	PART NUMBER	QTY.
1	spring	1
2	distance block	2
3	spring plate	2

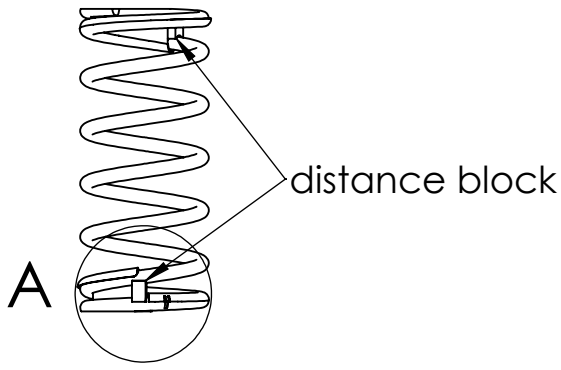
UNLESS OTHERWISE SPECIFIED: DIMENSIONS ARE IN MILLIMETERS WEIGHT ARE IN KILOGRAMM				
	NAME	SIGNATURE	DATE	REVISION
DRAWN	E.Reispere		12.03.2025	
APPV'D				

PART NUMBER / DWG NO.:	VL57
DESCRIPTION:	Spring swing RABBITS

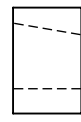
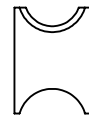
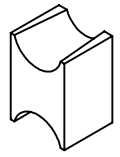


MATERIAL:	wood, metal, plastic	A4
WEIGHT:		SCALE: 1:4
		SHEET 5 OF 12

A



view 1

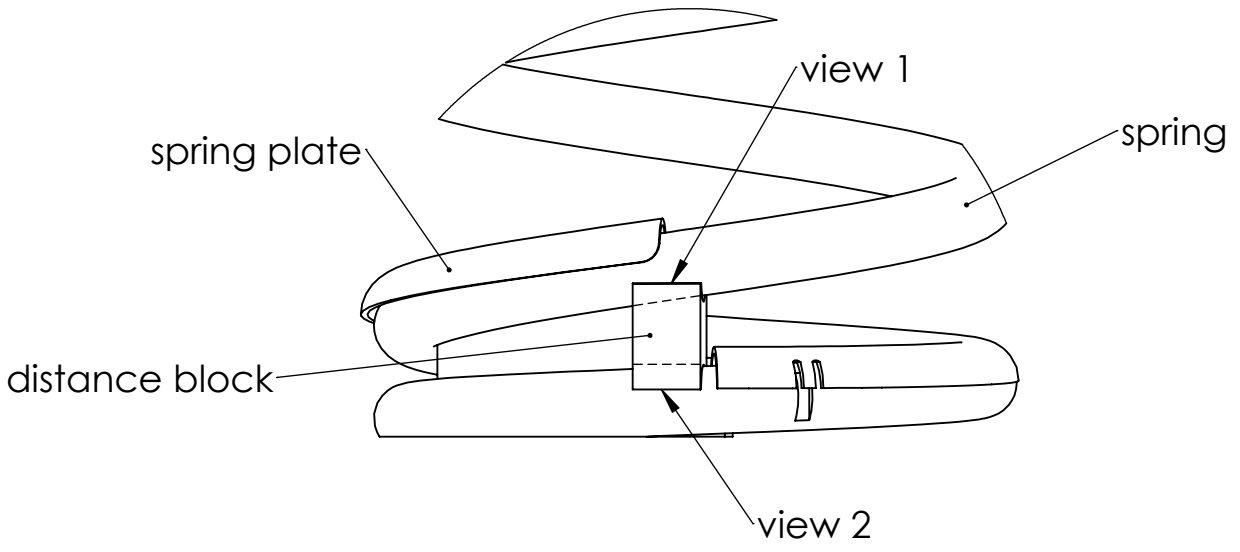


view 2

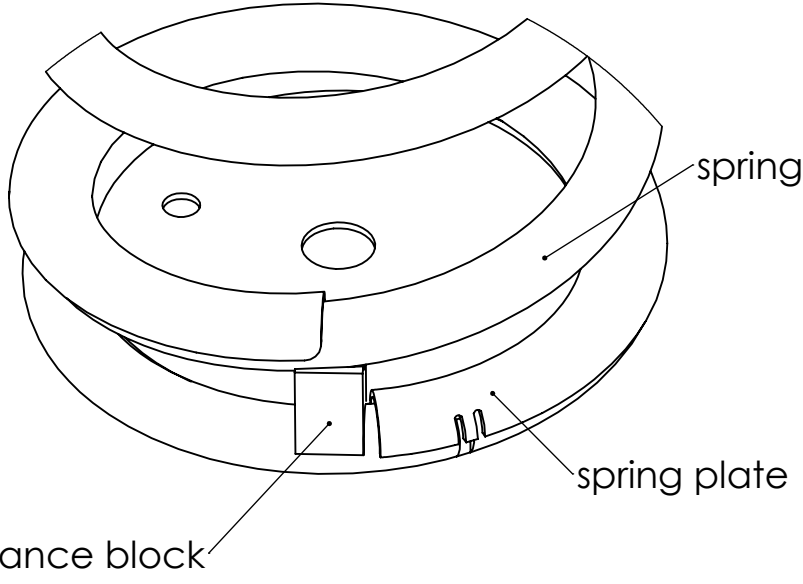


B

C



D



E

F

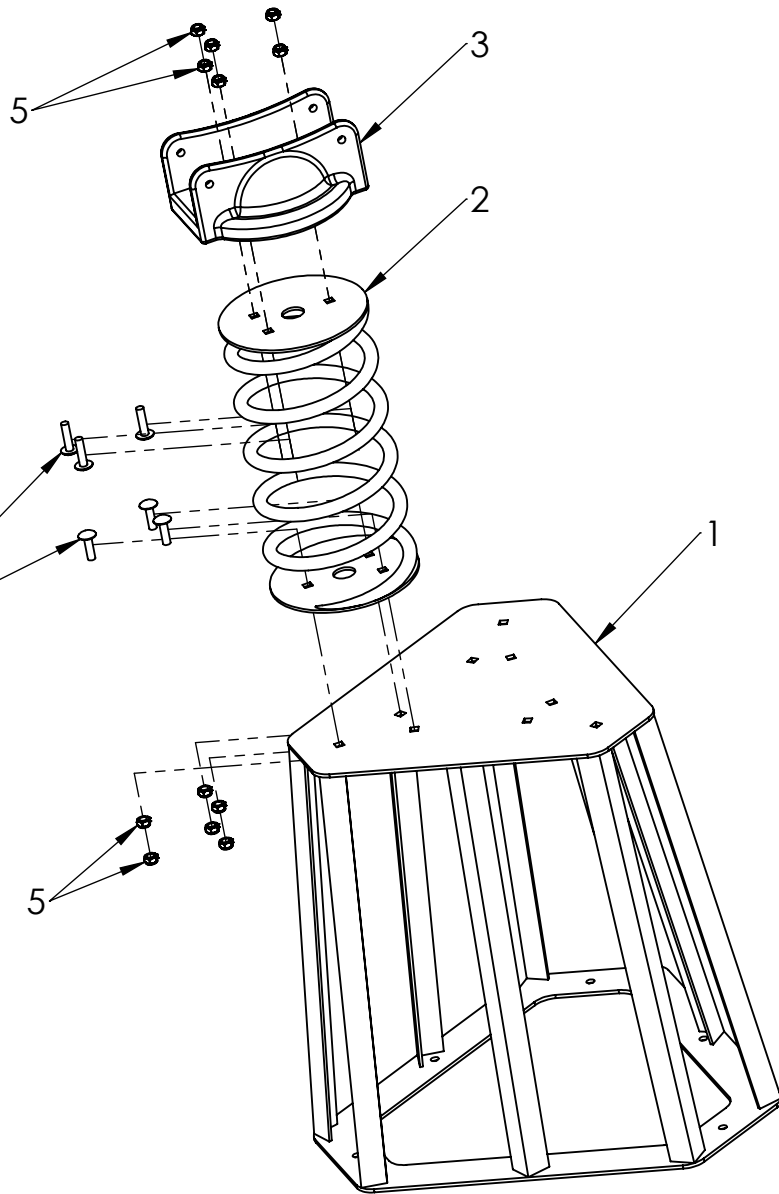
UNLESS OTHERWISE SPECIFIED:
DIMENSIONS ARE IN MILLIMETERS
WEIGHT ARE IN KILOGRAMM

	NAME	SIGNATURE	DATE	REVISION
DRAWN	E.Reispere		12.03.2025	
APPV'D				

PART NUMBER / DWG NO.:	VL57
DESCRIPTION:	Spring swing RABBITS



MATERIAL:	wood, metal, plastic	A4
WEIGHT:	SCALE: 1:4	SHEET 6 OF 12



ITEM NO.	DESCRIPTION
1	VL57 ground fixing
2	spring with spring disk
3	central console
4	bolt M10x35 DIN603
5	nut M10 DIN985
6	bolt M10x40 DIN603

UNLESS OTHERWISE SPECIFIED:
DIMENSIONS ARE IN MILLIMETERS
WEIGHT ARE IN KILOGRAMM

PART NUMBER / DWG NO.:

VL57

	NAME	SIGNATURE	DATE	REVISION
DRAWN	E.Reispere		12.03.2025	
APPV'D				

DESCRIPTION:

Spring swing RABBITS



Tiptap OÜ

MATERIAL:

wood, metal, plastic

A4

WEIGHT:

SCALE: 1:4

SHEET 7 OF 12

A

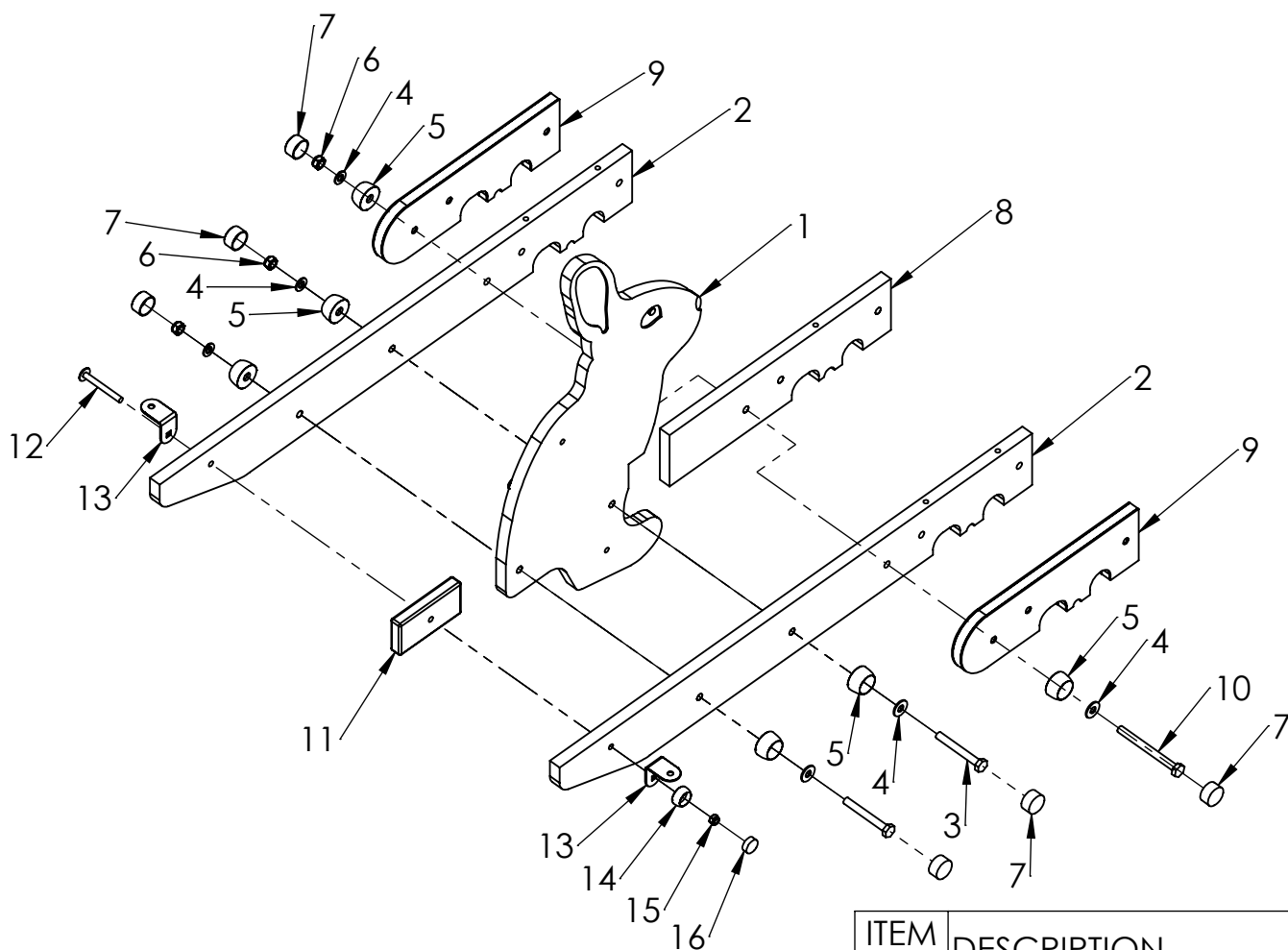
B

C

D

E

F



ITEM NO.	DESCRIPTION
1	VL57 panel
2	VL57 board 1
3	bolt M10x80 DIN931
4	washer M10 DIN9054
5	nut cover M12
6	nut M10 DIN985
7	nut cover cap M12
8	VL57 board 3
9	VL57 board 2
10	bolt M10x110 DIN931
11	distance block
12	bolt M8x70 DIN603
13	corner 45x48
14	nut cover M8
15	nut M8 DIN985
16	nut cover cap M8

UNLESS OTHERWISE SPECIFIED:
DIMENSIONS ARE IN MILLIMETERS
WEIGHT ARE IN KILOGRAMM

PART NUMBER / DWG NO.:

VL57

	NAME	SIGNATURE	DATE	REVISION
DRAWN	E.Reispere		12.03.2025	
APPV'D				

DESCRIPTION:

Spring swing RABBITS

MATERIAL:

wood, metal, plastic

A4

WEIGHT:

SCALE: 1:30

SHEET 8 OF 12



Tiptaptap OÜ

Tiptaptap OÜ
Veetorni 9,
Jüri alevik, Rae vald,
75301 Harjumaa

A

important: drill hole 13mm
drill for ITEM NO. 8

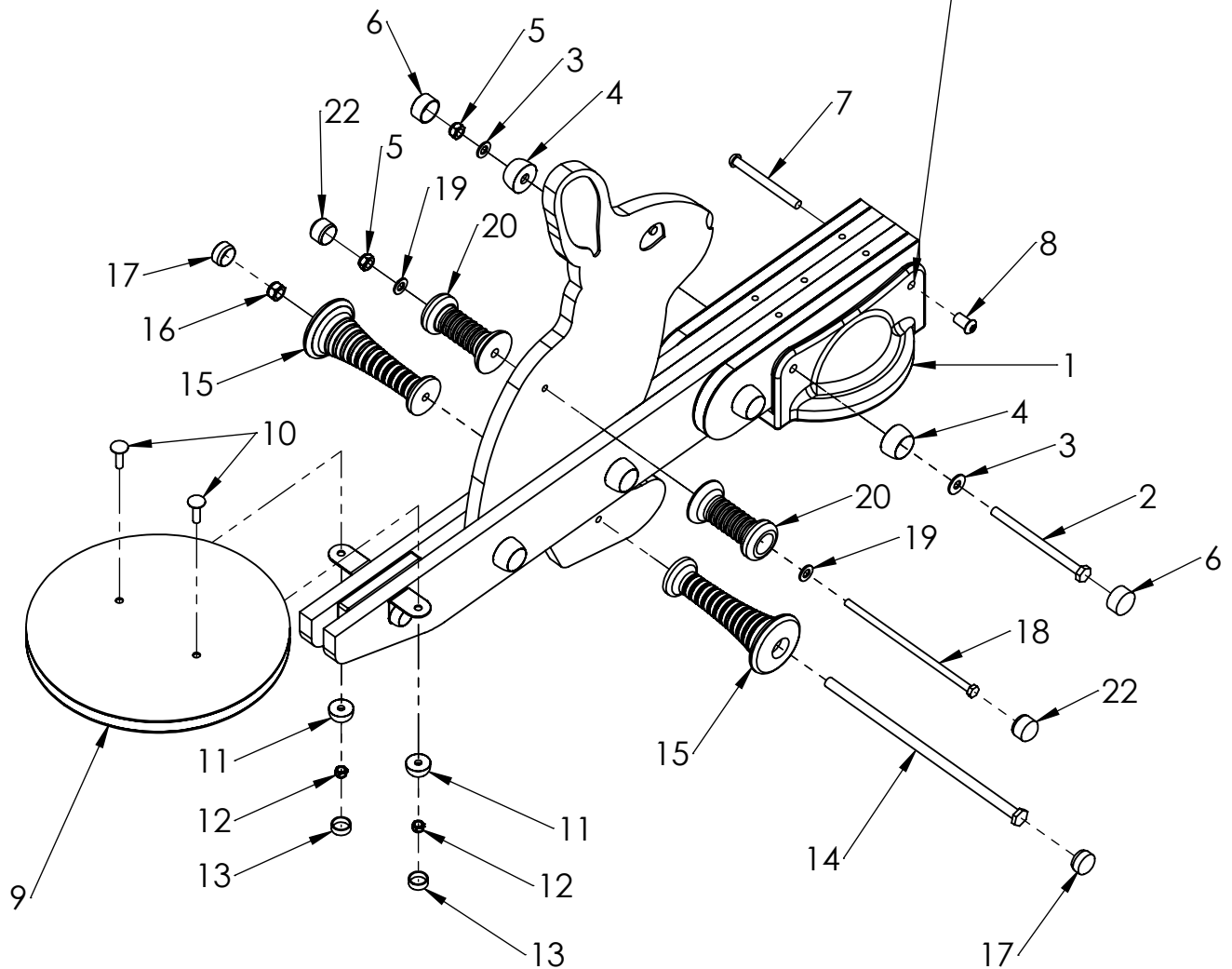
B

C

D

E

F



ITEM NO.	DESCRIPTION	ITEM NO.	DESCRIPTION
1	central console	12	nut M8 DIN985
2	bolt M10x140 DIN931	13	nut cover cap M8
3	washer M10 DIN9054	14	bolt M12x305 DIN931
4	nut cover M12	15	leg support
5	nut M10 DIN985	16	nut M12 DIN985
6	nut cover cap M12	17	leg support n cover cap
7	bolt M10x100 DIN7380	18	bolt M10x200 DIN931
8	nut M10x20 pin tx Art.9121	19	washer M10 DIN125
9	seat circle \varnothing 300	20	handle new
10	bolt M8x30 DIN603	21	VL57 board 1
11	nut cover M8	22	handle new cap

UNLESS OTHERWISE SPECIFIED:
DIMENSIONS ARE IN MILLIMETERS
WEIGHT ARE IN KILOGRAMM

PART NUMBER / DWG NO.:

VL57

	NAME	SIGNATURE	DATE	REVISION
DRAWN	E.Reispere		12.03.2025	
APPV'D				

DESCRIPTION:

Spring swing RABBITS

MATERIAL:

wood, metal, plastic

A4

WEIGHT:

SCALE: 1:30

SHEET 9 OF 12



Tiptap OÜ

A

B

C

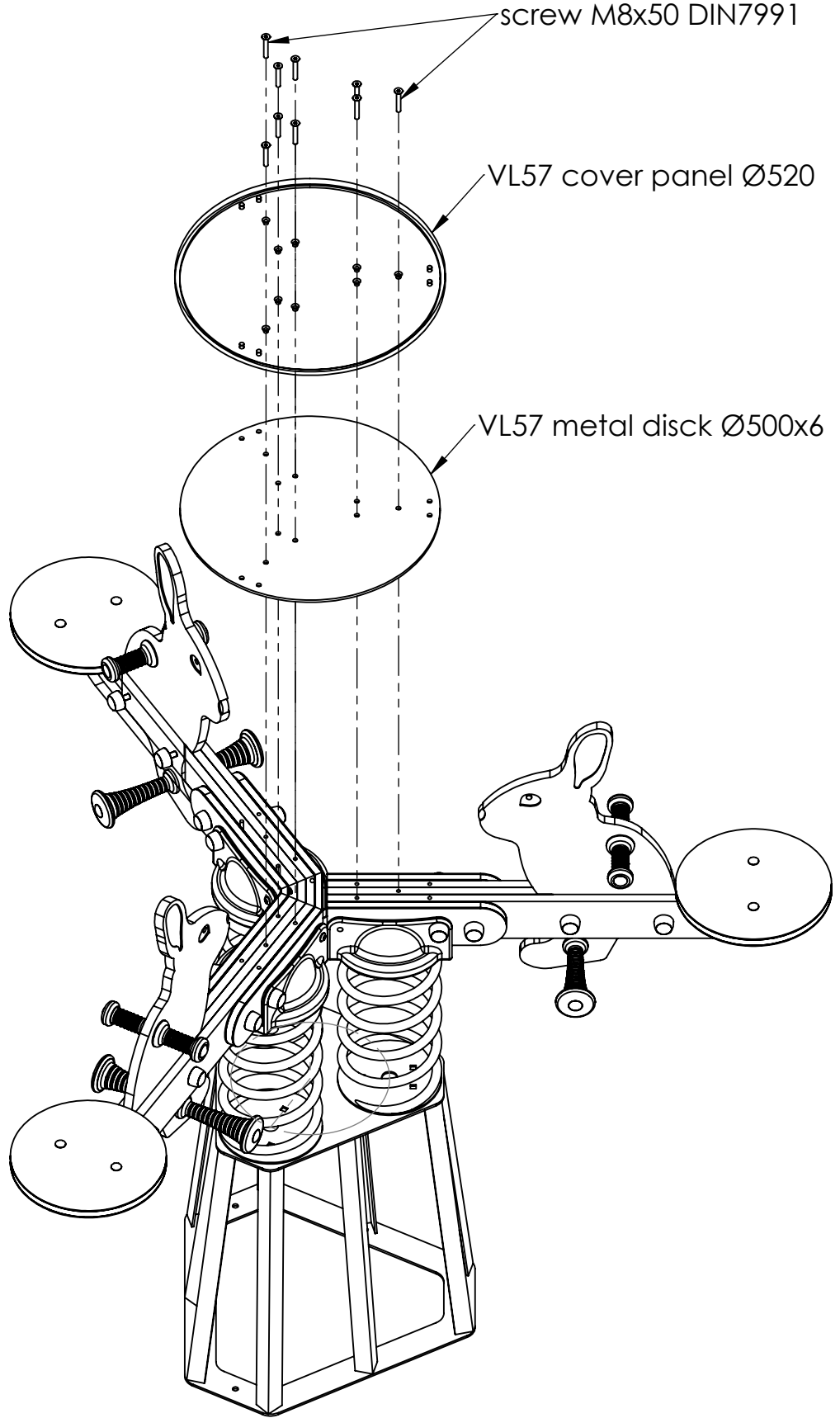
D

E

screw M8x50 DIN7991

VL57 cover panel Ø520

VL57 metal disk Ø500x6



UNLESS OTHERWISE SPECIFIED:
 DIMENSIONS ARE IN MILLIMETERS
 WEIGHT ARE IN KILOGRAMM

PART NUMBER / DWG NO.:
VL57

	NAME	SIGNATURE	DATE	REVISION
DRAWN	E.Reispere		12.03.2025	
APPV'D				

DESCRIPTION:
Spring swing RABBITS



MATERIAL:	wood, metal, plastic	A4
WEIGHT:		SCALE: 1:30
		SHEET 10 OF 12

A

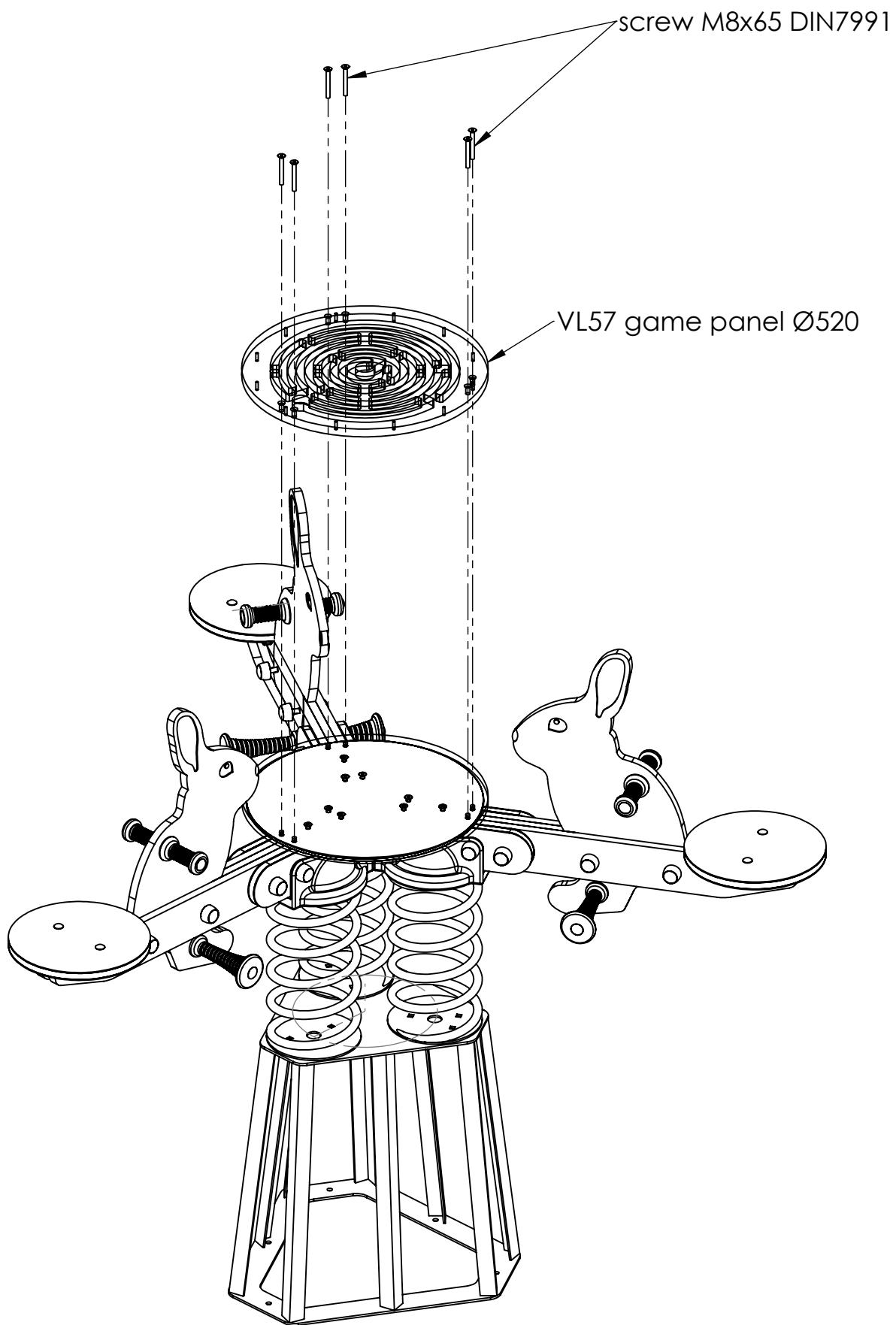
B

C

D

E

F



UNLESS OTHERWISE SPECIFIED:
 DIMENSIONS ARE IN MILLIMETERS
 WEIGHT ARE IN KILOGRAMM

PART NUMBER / DWG NO.:
VL57

	NAME	SIGNATURE	DATE	REVISION
DRAWN	E.Reispere		12.03.2025	
APPV'D				

DESCRIPTION:
Spring swing RABBITS



MATERIAL:	wood, metal, plastic	A4
WEIGHT:		SCALE: 1:30
		SHEET 11 OF 12

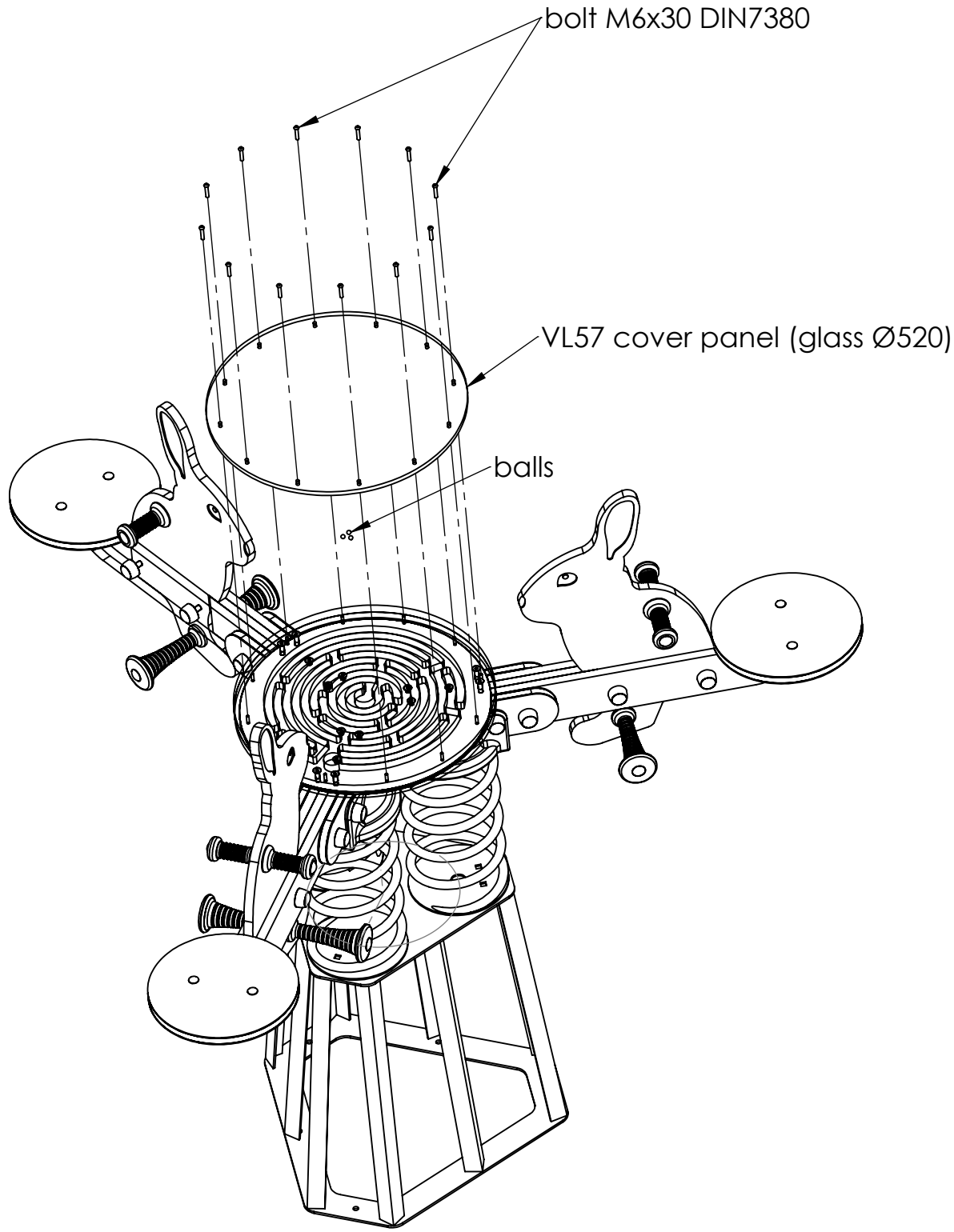
A

B

C

D

E



UNLESS OTHERWISE SPECIFIED:
 DIMENSIONS ARE IN MILLIMETERS
 WEIGHT ARE IN KILOGRAMM

PART NUMBER / DWG NO.:
VL57

	NAME	SIGNATURE	DATE	REVISION
DRAWN	E.Reispere		12.03.2025	
APPV'D				

DESCRIPTION:
Spring swing RABBITS



MATERIAL:	wood, metal, plastic	A4
WEIGHT:		
	SCALE: 1:30	SHEET 12 OF 12